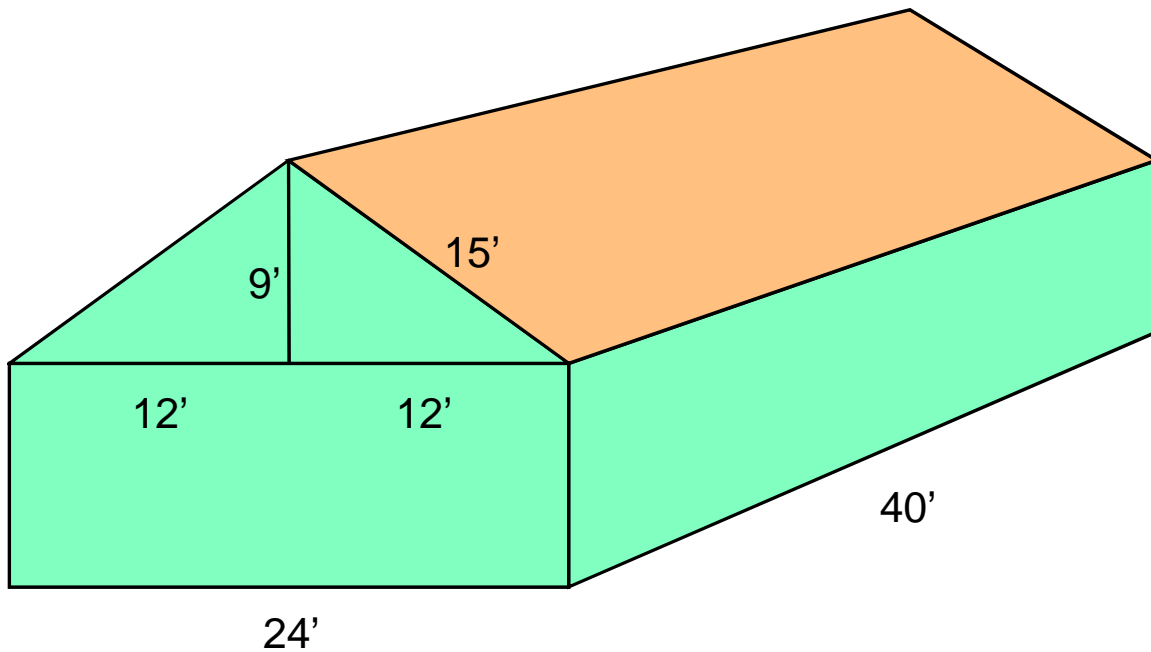
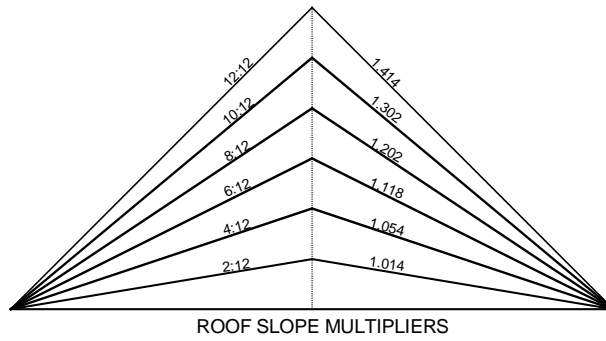
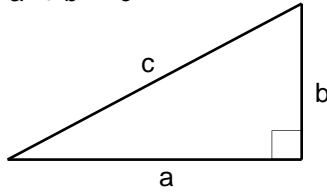


$c \div a = \text{slope multiplier}$
 $a^2 + b^2 = c^2$



$$a^2 + b^2 = c^2$$

$$12^2 + 9^2 = 15^2$$

$$144 + 81 = 225$$

$$\text{New \#} \div \text{Old \#} = \Delta \text{ "change"}$$

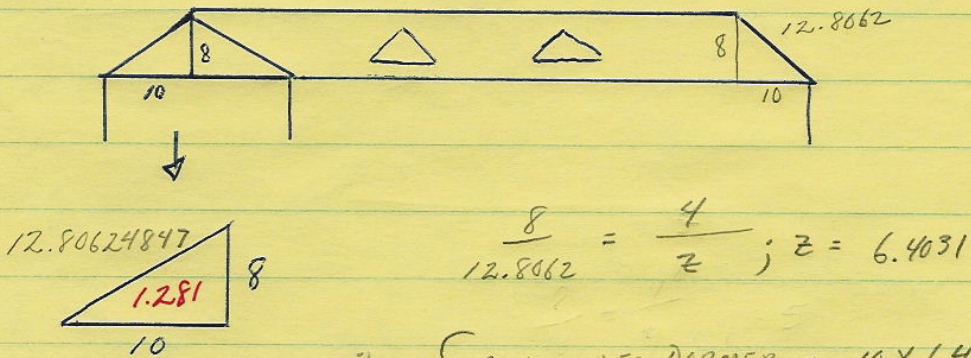
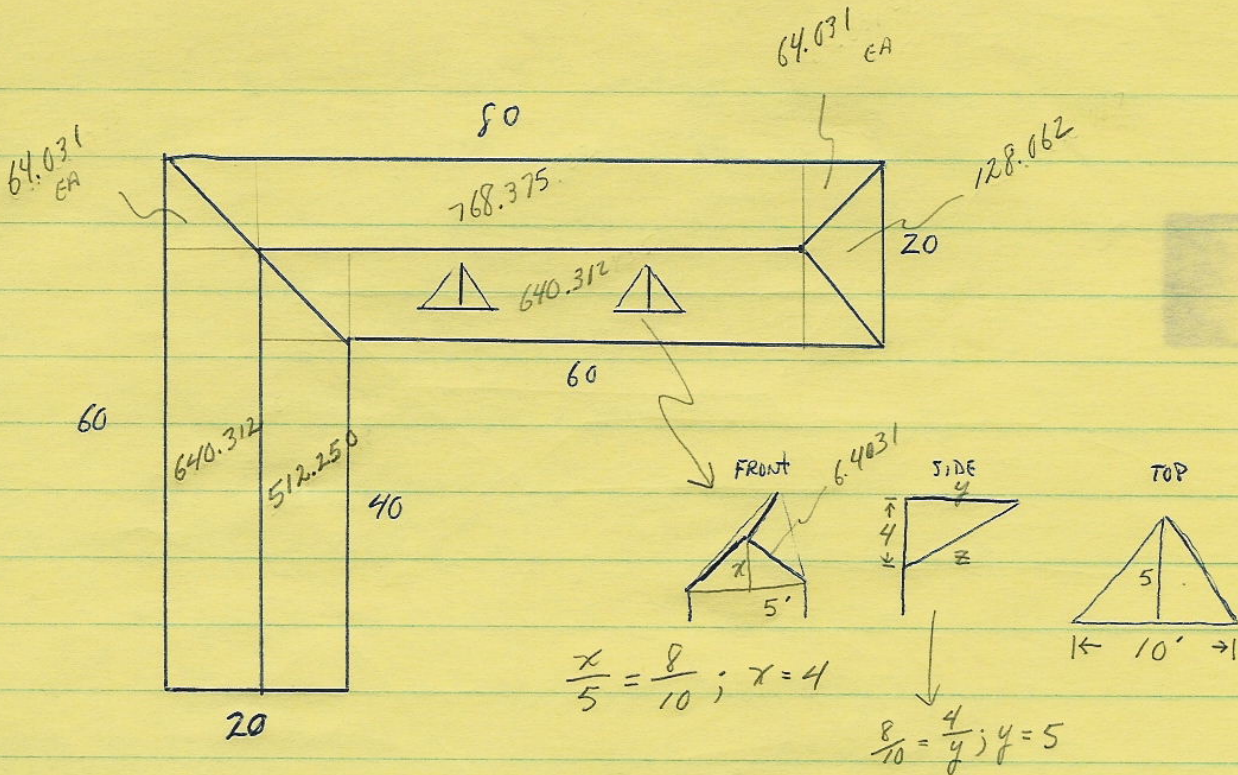
$$15' \div 12' = 1.25$$

$$1.25 = \text{slope multiplier}$$

Area of roof if flat = $24' \times 40' = 960 \text{ sq. ft.}$
 Area of roof pitched = $30' \times 40' = 1,200 \text{ sq. ft.}$
 -or-
 $24' \times 40' \times \text{multiplier } (1.25) = 1,200 \text{ sq. ft.}$

Visit us at <http://www.ReserveDataAnalysis.com>

Roof Slope Multiplier Proof with Dormers



CANCEL EACH OTHER
 AREA UNDER DORMER = $10 \times 6.4031 \div 2 = 32.0155 \text{ \#}$
 AREA OF PITCHED DORMER = $6.4031 \times 5 = 32.0155 \text{ \#}$

TOTAL = $\left. \begin{array}{l} 64.031 \times 1 \text{ (Sm } \Delta\text{'s)} \\ 128.062 \text{ (Lg } \Delta\text{'s)} \\ 640.312 \\ 512.250 \\ 768.375 \\ 640.312 \end{array} \right\} = 3073.497 \text{ \#}$

AREA = $20 \times 60 \times 2 \times 1.281 = 3074.4 \text{ \#}$
 $\times 1.280624847 = 3073.5 \text{ \#}$